



# MONTHLY MEMBERSHIP PROGRESS REPORT

District 33 S

Results as of: 03/31/2018

GMT: MAHESH CHITNIS

LOCATION MASSACHUSETTS

GMT CA

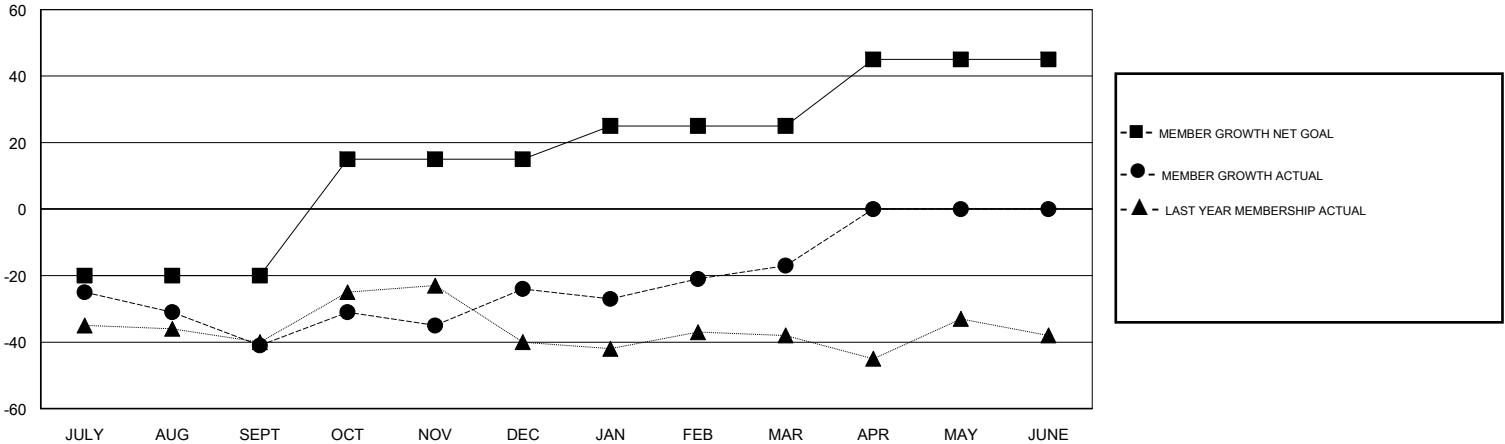
Clubs			
RESULTS FOR 2017-2018			
QUARTER	NEW CLUB GOAL	NEW CLUBS	DROPPED CLUBS
JULY/AUG/SEPT	0	0	0
OCT/NOV/DEC	1	0	0
JAN/FEB/MAR	0	0	0
APR/MAY/JUNE	1	0	0

Members			
RESULTS FOR 2017-2018			
QUARTER	MEMBER GROWTH NET GOAL	MEMBER GROWTH ACTUAL	DROPPED MEMBERS ACTUAL (including transfers)
JULY/AUG/SEPT	-20	14	53
OCT/NOV/DEC	35	61	38
JAN/FEB/MAR	10	35	25
APR/MAY/JUNE	20	0	0

GOALS AND ACTUAL NEW CLUBS CUMULATIVE



GOALS AND ACTUAL MEMBERS CUMULATIVE



DROPPED CLUBS: 0
------------------

26 CLUBS OF 47 ADDED 1 OR MORE NEW MEMBERS

GENDER DISTRIBUTION	
MALE	1,139 (66.41%)
FEMALE	576 (33.59%)
Women Percentage Fiscal Year Goal: 40%	

DROPPED MEMBERS	
DECEASED	13
CLUB CANCELLED	0
OTHER	103
<b>TOTAL</b>	<b>116</b>

[CLICK HERE FOR CUMULATIVE MEMBERSHIP DATA](#)

TOTAL FAMILY UNIT MEMBERS	214
FAMILY MEMBERS PAYING HALF DUES	110